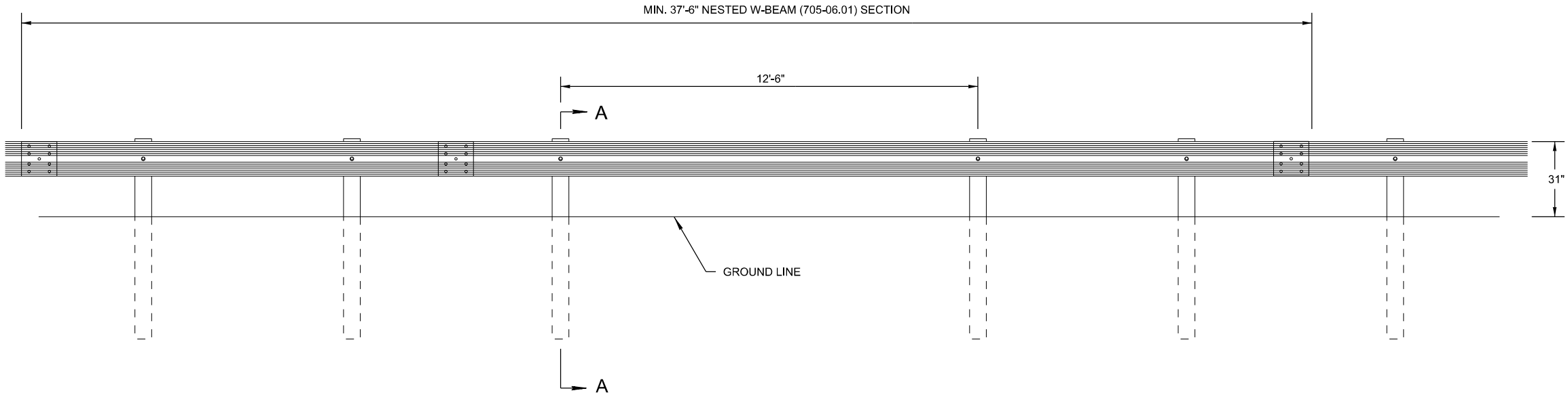
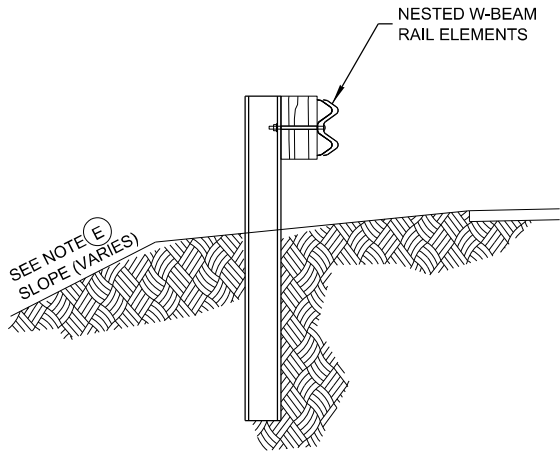


REV. 1-29-16: CORRECTED PAY ITEM NUMBER.

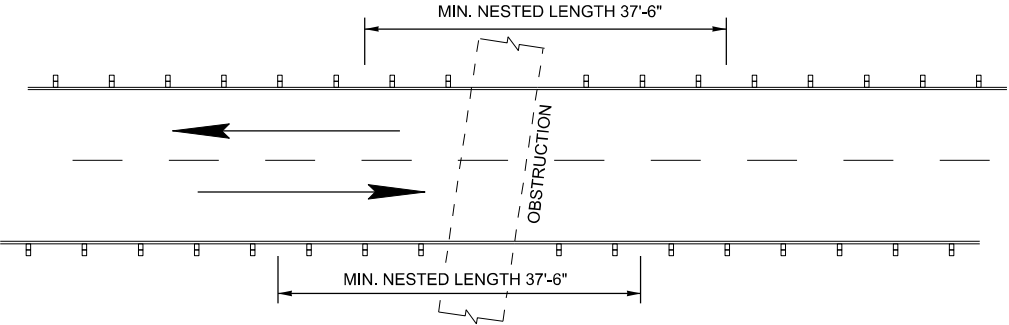
REV. 3-28-17: CLARIFIED "RD01-SERIES" TO "RD01-TS-SERIES IN GENERAL NOTE(E) ADDED NOTE(F) CHANGED ITEM NUMBER IN ELEVATION VIEW.



ELEVATION



SECTION "A-A"



EXAMPLE
TWO-WAY TRAFFIC LAYOUT

GENERAL NOTES

- (A) DRAWING TO BE USED FOR GUARDRAIL PLACEMENT WHEN ENCOUNTERING AN OBSTRUCTION WHICH WILL PREVENT GUARDRAIL POST TO BE INSTALLED PROPERLY.
- (B) A POST MAY BE OMITTED ON A RUN OF GUARDRAIL ONLY. THIS APPLICATION IS NOT TO BE USED AS PART OF AN END TERMINAL. IF OBSTRUCTION IS ENCOUNTERED AT TERMINAL LOCATION, EXTEND GUARDRAIL RUN TO A POINT WHERE TERMINAL MAY BE INSTALLED PROPERLY.
- (C) ONLY ONE POST MAY BE OMITTED AT AN OBSTRUCTION.
- (D) WHEN MORE THAN ONE OBSTRUCTION IS ENCOUNTERED ON A RUN OF GUARDRAIL, THREE CONSECUTIVE POSTS SHALL BE INSTALLED PRIOR TO OMITTING ANOTHER POST.
- (E) SEE STANDARD DRAWING RD01-TS-SERIES FOR SLOPE CRITERIA.
- (F) IF ANY OF THE CONDITIONS NOTED IN GENERAL NOTES A, C, OR D CANNOT BE MET, USE GUARDRAIL WITH FOOTING OPTION SEE S-GRS-3.
- (G) THE NESTED SECTION WILL BE BUILT AS SHOWN BUT PAYMENT WILL BE MEASURED FOR A LENGTH OF 3 POSTS ON EITHER SIDE OF THE OMITTED POST.
- (H) THIS RAIL SYSTEM HAS BEEN TESTED AND PASSED BY THE CRITERIA SET FORTH BY AASHTO MASH TEST LEVEL 3, AS DOCUMENTED IN ROADSIDE SAFETY RESEARCH PROGRAM POOLED FUND STUDY NO. TPF-5(114) DATED NOV. 11, 2011.

MINOR REVISION -- FHWA
APPROVAL NOT REQUIRED.

STATE OF TENNESSEE
DEPARTMENT OF
TRANSPORTATION

SPECIAL CASE
LONG SPAN
GUARDRAIL
ONE POST OMITTED

7-11-13

S-GRS-1